

Legend

- East Anglia ONE North Offshore Cable Corridor
- Sizewell B Tidally Restricted Shallow Water Area / Vessel Transit and Loafing Exclusion Zone
- Approximate SZB Intake Location
- Approximate SZB Outfall Location
- Punch Out and Trenching Restriction Area

ID	Latitude (DMS)	Longitude (DMS)
A	52 14 12.332N	001 37 41.352E
B	52 14 12.332N	001 38 55.478E
C	52 11 15.619N	001 38 55.478E
D	52 11 15.619N	001 37 21.473E



Rev	Date	By	Comment	Approved:
3	19/03/2021	AB	Third Issue.	
2	03/02/2021	AB	Second Issue.	Prepared: AB
1	04/01/2021	AB	First Issue.	Checked: PM
				Approved: FM

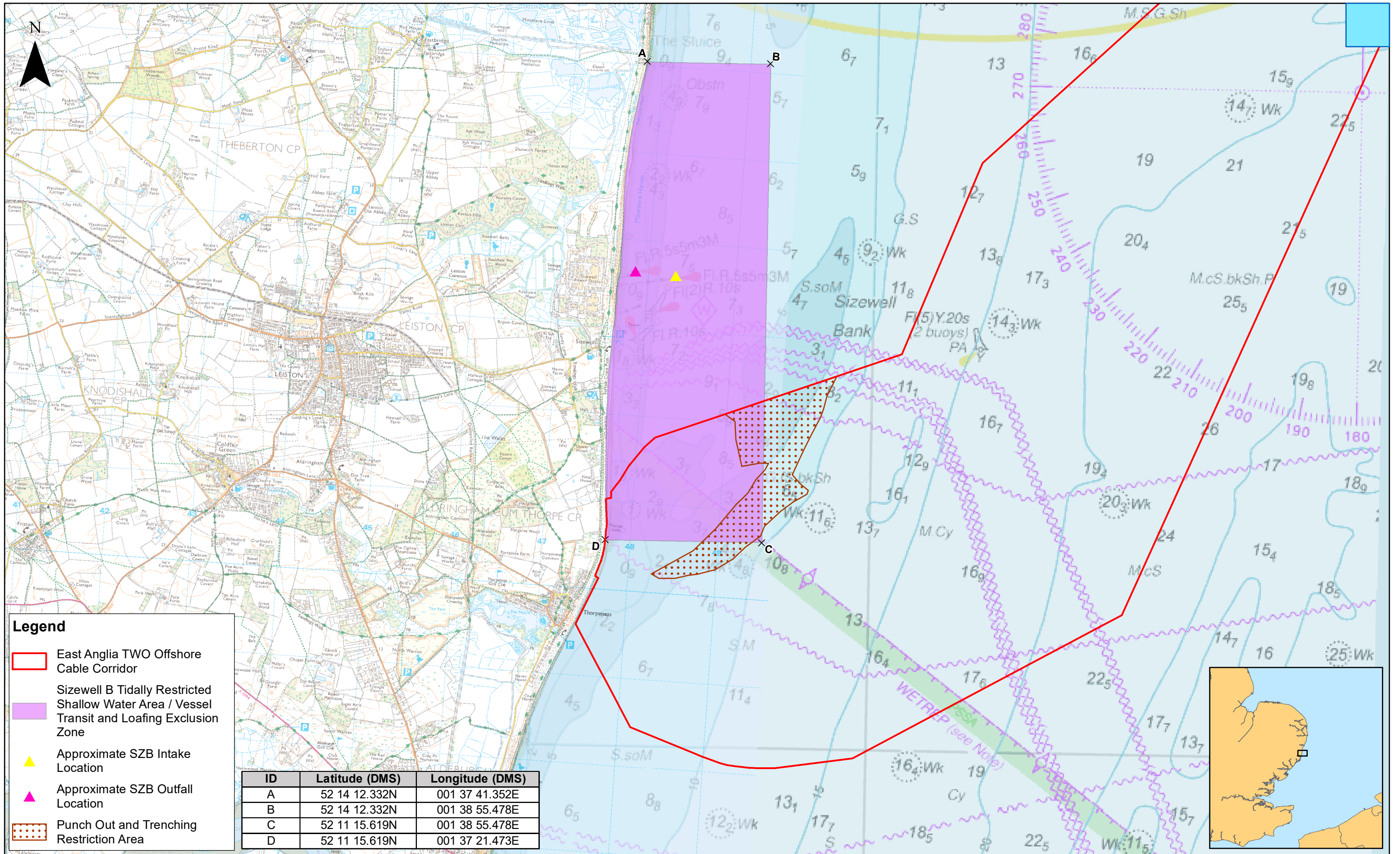
1:40,000
Scale @ A3

Source: EDF, 2021. Contains OS data © Crown copyright and database right, 2021. © British Crown and OceanWise, 2021. All rights reserved. License No. EMIS-00001-048150. Not to be used for navigation.

This map has been produced to the latest known information at the time of issue, and has been produced for your information only. Please consult with the SPR Offshore GIS team to ensure the content is still current before using the information contained on the map. To the fullest extent permitted by law, we accept no responsibility or liability (whether in contract, tort (including negligence) or otherwise) in respect of any errors or omissions in the information contained in the map and shall not be liable for any loss, damage or expense caused by such errors or omissions.

East Anglia ONE North
Activity Exclusion Zones

Drg No	EA1N-DEV-DRG-IBR-001260	
Rev	3	Datum: WGS 1984
Date	19/03/21	Projection: Zone 31N
Figure	1	



Legend

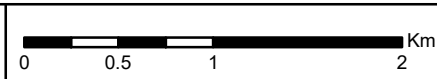
- East Anglia TWO Offshore Cable Corridor
- Sizewell B Tidally Restricted Shallow Water Area / Vessel Transit and Loafing Exclusion Zone
- ▲ Approximate SZB Intake Location
- ▲ Approximate SZB Outfall Location
- Punch Out and Trenching Restriction Area

ID	Latitude (DMS)	Longitude (DMS)
A	52 14 12.332N	001 37 41.352E
B	52 14 12.332N	001 38 55.478E
C	52 11 15.619N	001 38 55.478E
D	52 11 15.619N	001 37 21.473E



3	19/03/2021	AB	Third Issue.		
2	03/02/2021	AB	Second Issue.	Prepared:	AB
1	04/01/2021	AB	First Issue.	Checked:	PM
Rev	Date	By	Comment	Approved:	FM

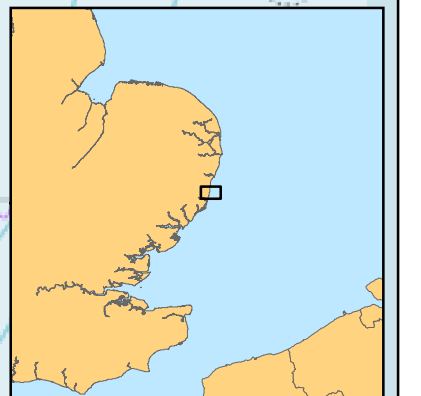
1:40,000
Scale @ A3



Source: EDF, 2021. Contains OS data © Crown copyright and database right, 2021. © British Crown and OceanWise, 2021. All rights reserved. License No. EMIS-00001-048150. Not to be used for navigation.
This map has been produced to the latest known information at the time of issue, and has been produced for your information only. Please consult with the SPR Offshore GIS team to ensure the content is still current before using the information contained on the map. To the fullest extent permitted by law, we accept no responsibility or liability (whether in contract, tort (including negligence) or otherwise) in respect of any errors or omissions in the information contained in the map and shall not be liable for any loss, damage or expense caused by such errors or omissions.

East Anglia TWO

Activity Exclusion Zones



Drg No	EA2-DEV-DRG-IBR-001259	
Rev	3	Datum: WGS 1984
Date	19/03/21	Projection: Zone 31N
Figure	1	